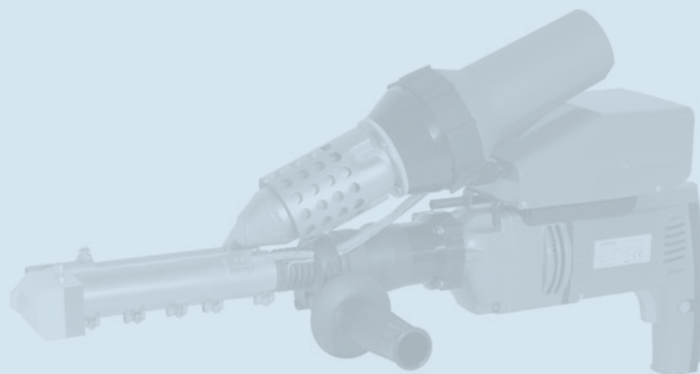
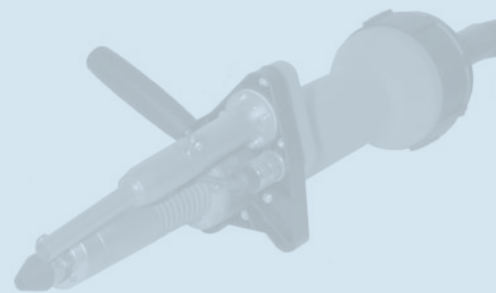
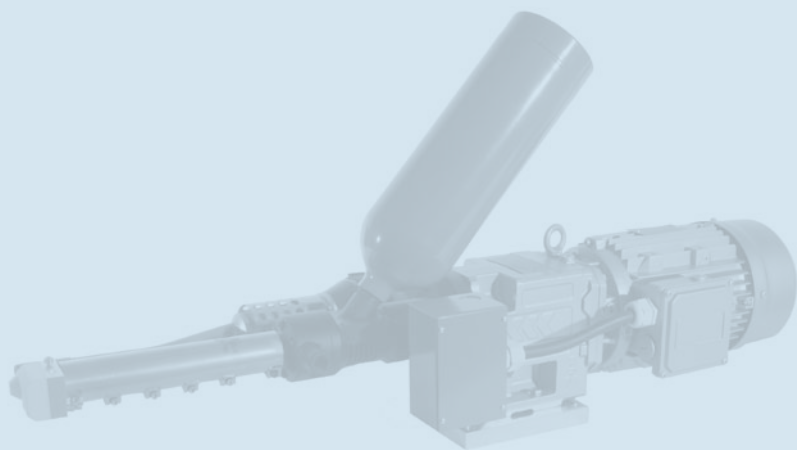


HEAT ON

Plastic Welding Extruders



BAK

www.bak-ag.com



BAK Thermoplastic
Welding Technology AG

Industriestrasse 6
6064 Kerns / Switzerland

E-Mail info@bak-ag.com

Telefon +41 (0)41 661 22 50
Fax +41 (0)41 661 22 51

HEAT ON

- Service-friendly and less wear parts than other extruder brands.
- Patented temperature measurement system by Dohle, Germany. The thermocouple is located inside the mass barrel on the outlet, this guarantees a real temperature control and read out.
- Cold start protection by mass and air temperature.
- All types are available with a revolving head with integrated preheat nozzle to weld in any direction.
- No wear parts on the rod feed system.

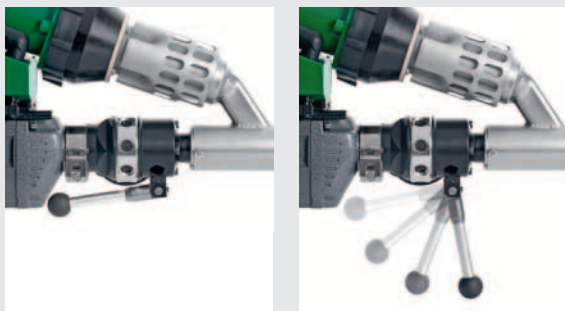
For more information visit our website

www.bak-ag.com

We develop individual tool types, especially suited for your application.



View front panel ExOn2-6.



Integrated tool stand for Exon1-3.



All the extruders are also available for external air supply on request.

Hand welding extruder

MICRO

Small,
light,
unique

- for welding of PE, PP, PVDF and PVC
- separated air and mass temperature control
- patented temperature control direct in the mass
- internal air supply built-in in the control box
- brushless motor for drive and blower



Worldwide the smallest and lightest hand held extrusion welder. Extruder weight only 2,3 kg, Output up to 0,5 kg/h.

Technical Data

Voltage	V	230
Frequency	Hz	50/60
Power consumption	W	1300
Output with HDPE material	kg/h	0,1-0,5
Welding consumable	mm	3 and 4 round
Size Extruder (l x w x h)	mm	410 x 75 x 100
Size control box (l x w x h)	mm	530 x 210 x 410
Weight Extruder	kg	2,3
Weight control box	kg	20 with 5 m cord
Protection class I		⊕
Markings		CE

Hand welding extruder

EXON 1/2

ExOn 1***



ExOn 2



ExOn1 A*



ExOn 2A*



Type		ExOn 1	ExOn 1A	ExOn 2	ExOn 2A
Voltage	V	230 or 120	230 or 120	230	230
Frequency	Hz	50/60	50/60	50/60	50/60
Power consumption	W	2640	2320	3600	3100
Output with HDPE material	kg/h	max. 1,2	max. 1,2	max. 2	max. 2
Welding consumable	mm	3 and 4 round	3 and 4 round	4 or 5** round	4 or 5** round
Size control box (l x w x h)	mm	500x100x340	500x100x340	560x120x350	560x120x350
Weight	kg	5	5	7	7
Welding materials		PE, PP, PVDF, PVC	PE, PP	PE, PP, PVDF, PVC	PE, PP
Protection class I		⊕	⊕	⊕	⊕
Markings		CE	CE	CE	CE

* Air heated hand welding extruder

** indicate on order

*** The extruder is on request also available with digital read out of the air temperature.

Hand welding extruder

EXON 3/5/6

ExOn 3



ExOn 5



ExOn 3A *



ExOn 6



Type		ExOn 3	ExOn 3A	ExOn 5	ExOn 6
Voltage	V	230	230	230 oder 400	230 oder 400
Frequency	Hz	50/60	50/60	50/60	50/60
Power consumption	W	3700	3600	5300	5300
Output with HDPE material	kg/h	max. 3	max. 3	max. 5	max. 6
Welding consumable	mm	4 or 5** round	4 or 5** round	5 round	pellets
Size control box (l x w x h)	mm	650 x 120 x 360	650 x 120 x 360	660 x 126 x 448	660 x 126 x 365/600
Weight	kg	8	8	11	12
Welding materials		PE, PP, PVDF, PVC	PE, PP	PE, PP	PE, PP
Protection class I		⊕	⊕	⊕	⊕
Markings		CE	CE	CE	CE

* Air heated hand welding extruder

** indicate on order

EXON 7/8

HS 28

ExOn 7



ExOn 8



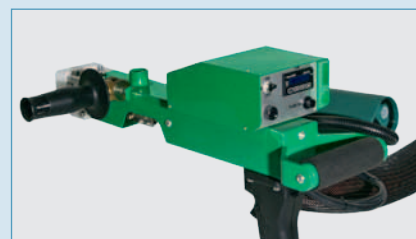
HS28



Control box
type ExOn 7, ExOn 8



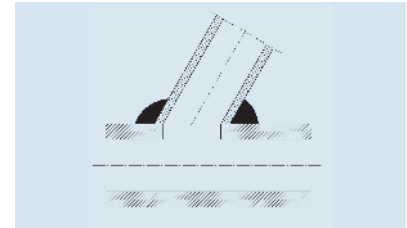
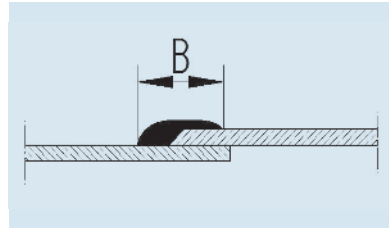
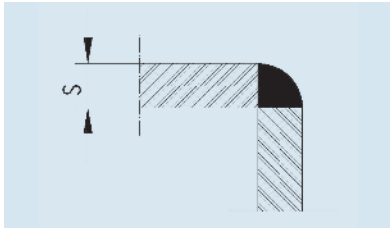
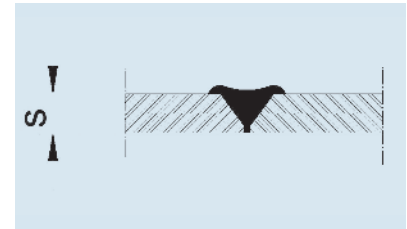
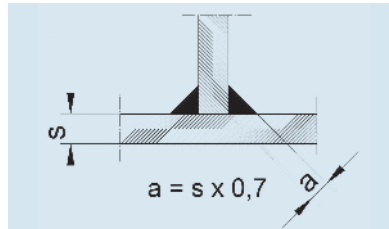
HS28
welding head



Type		ExOn 7	ExOn 8	HS28
Voltage	V	3 x 400	3 x 400	3 x 400
Frequency	Hz	50/60	50/60	50/60
Power consumption	W	6000	6000	11 000
Output with HDPE material	kg/h	max. 5	max. 6	max. 12
Welding consumable	mm	5 round	pellets	pellets
Size control box (l x w x h)	mm	846 x 267 x 242	852 x 267 x 242/430	1040 x 600 x 660
Weight	kg	17	18	210
Welding materials		PE, PP	PE, PP	PE, PP
Protection class I		⊕	⊕	⊕
Markings		CE	CE	CE

ACCESSORIES

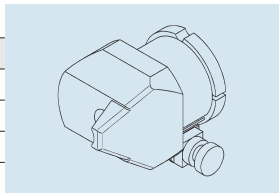
Welding shoe calculation



Hand welding extruder type Micro

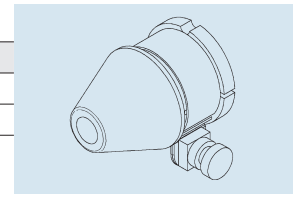
Welding shoe fillet seam

Order no.	sheet thickness (s)
D-1175	3-4
D-1176	5-6
D-1177	8
D-1178	10



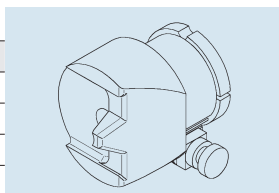
Welding shoe round

Order no.	
D-1183	∅ 7
D-1184	∅ 9



Welding shoe V-seam

Order no.	sheet thickness (s)
D-1179	3-4
D-1180	5-6
D-1181	8



Airtube with tacking nozzle

Order no.	
D-1185	



ACCESSORIES

Hand welding extruder type ExOn 1-6

Transport case metal

Order no.

D-0965	Type ExOn 1
D-1644	Type ExOn 2-3
D-1041	Type ExOn 5-6



Revolving head

Order no.

DX321	Type ExOn 2
DX322	Type ExOn 2A
DX323	Type ExOn 3
DX324	Type ExOn 3A
DX325	Type ExOn 5-6



Angle head 45°

Order no.

DX326	Type ExOn 2
DX327	Type ExOn 2A
DX328	Type ExOn 3
DX329	Type ExOn 3A
DX330	Type ExOn 5-6



Angle head 90°

Order no.

DX331	Type ExOn 2
DX332	Type ExOn 2A
DX333	Type ExOn 3
DX334	Type ExOn 3A
DX335	Type ExOn 5-6

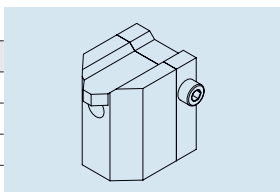


Welding shoes type ExOn 1/1A

Fillet seam

Order no. sheet thickness (s)

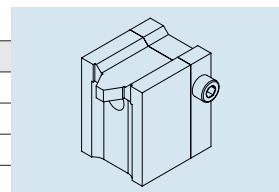
D-0827	5-6
D-0828	8
D-0829	10
D-0830	12



V-seam

Order no. sheet thickness (s)

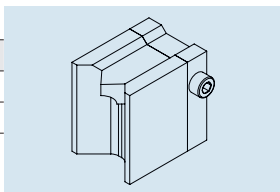
D-0831	5-6
D-0832	8
D-0833	10
D-0834	12



Corner seam

Order no. sheet thickness (s)

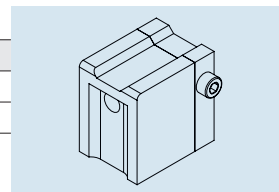
D-0837	5-8
D-0838	10-12



Overlap seam

Order no. seam width

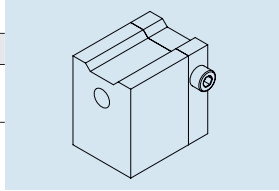
D-0835	20
D-0836	25



Welding shoes type ExOn 1/1A

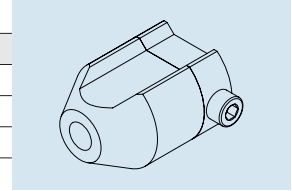
Unshaped

Order no.	
D-0842	30x40x30 mm Lxwxh



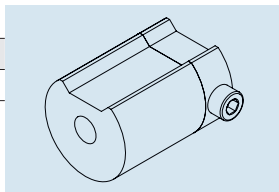
Round

Order no.	
D-0839	∅ 15 mm
D-0840	∅ 20 mm
D-0841	∅ 25 mm



Unshaped round

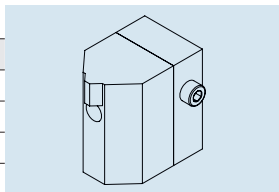
Order no.	
D-0843	∅ 30 mm



Welding shoes type ExOn 2-6

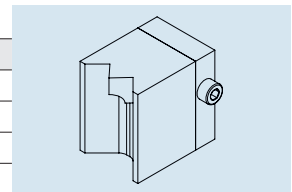
Fillet seam

Order no.	sheet thickness (s)
D-0174	5-8
D-0175	10-12
D-0177	15
D-0178	20
D-0179	25
D-0180	30
D-0181	35
D-0182	40



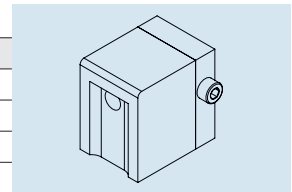
Corner seam

Order no.	
D-0195	5-8
D-0196	10
D-0197	15



Overlap seam

Order no.	
D-0192	25
D-0193	30
D-0194	35
D-0599	40

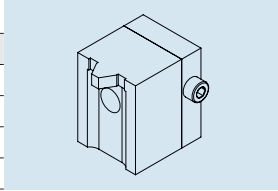


ACCESSORIES

Welding shoes ExOn 2-6

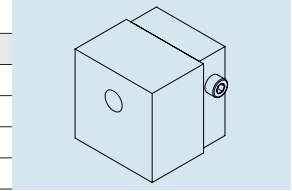
V-seam

Order no.	
D-0906	5-6
D-0183	8
D-0184	10
D-0185	12
D-0186	15
D-0187	20
D-0188	25
D-0189	30
D-0190	35
D-0191	40



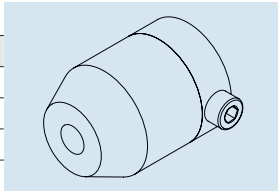
Unshaped

Order no.	
D-0223	lxw 45x30 mm
D-0224	lxw 50x40 mm
D-0225	lxw 45x45 mm
D-1237	lxw 45x50 mm
D-0247	lxw 60x70 mm



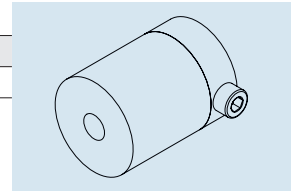
Round

Order no.	
D-0600	∅ 15 mm
D-0366	∅ 20 mm
D-0337	∅ 25 mm



Unshaped round

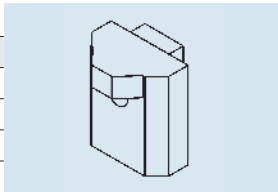
Order no.	
D-0598	∅ 35 mm



Welding shoes hose extruder HS28

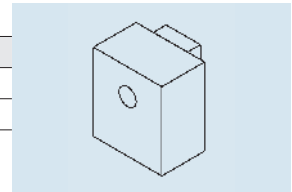
Fillet seam

Order no.	sheet thickness (s)
D-1761	30
D-1762	35
D-1763	40



Unshaped

Order no.	Size
D-1760	lxw 70x60 mm
D-1543	lxw 90x80 mm



Test equipment

Spark tester

Order no.
5200229



De-reeler for welding rod (1 roll)

Order no.
5118190



Vacuum pump

Order no.
DX150 230 V
DX096 120 V



Vacuum test bells

Rectangular

Order no.
DX121 740x280x160 mm



Round

Order no.
5200305 Ø 360 mm



Inside edge

Order no.
5200315



Outside edge

Order no.
5200330



Inside corner down

Order no.
5200310



Outside corner down

Order no.
5200320



Inside corner up

Order no.
5200325



Outside corner up

Order no.
5200335



HeatOn-GROUP

— YOUR BEST CHOICE —

Consulting – Sales – Training – Service – Development

Beratung – Verkauf – Schulung – Service – Entwicklung

BAK
www.bak-ag.com 

DOHLE
www.dohle-extruder.de

HERZ
www.herz-gmbh.com



BAK Thermoplastic Welding Technology AG

Industriestrasse 6, 6064 Kerns/Switzerland
Tel. ++41 (0)41 661 22 50, Fax ++41 (0)41 661 22 51
e-mail info@bak-ag.com

Dohle Extrusionstechnik GmbH

Eitorfer Strasse 1, 53809 Ruppichteroth/Germany
Tel. ++49 (0)2295 902960, Fax ++49 (0)2295 902961
e-mail info@dohle-extruder.de

Herz GmbH

Biberweg 1, 56566 Neuwied/Germany
Tel. ++49 (0)2622 810 86, Fax ++49 (0)2622 810 80
e-mail info@herz-gmbh.com